

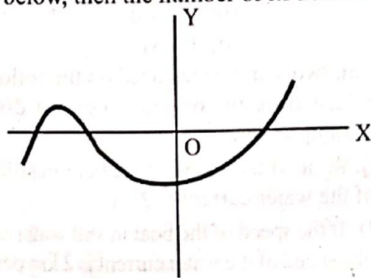
JIPMAT (Jammu) Solved Paper - 2023

Important Instructions to the Candidates:

- Total Number of Questions 100.
- There are three sections in this test paper. *Section-I* contains 33 questions from *Quantitative Ability*. *Section II* contains 33 questions from *Data interpretation & Logical Reasoning* and *Section III* contains 34 questions from *Verbal Ability & Reading Comprehension*.
- Each question will carry 4 marks. There will be *negative marking of 1 mark* for each wrong answer. All the questions will be multiple choice questions.
- There is NO Sectional Time Limit.

Quantitative Ability

- Two identical solid cubes of side 5 cm are joined end to end. Then the total surface area of the resulting cuboid is
(a) 300 cm² (b) 250 cm²
(c) 225 cm² (d) 200 cm²
- In $\triangle ABC$, $\angle B = 90^\circ$, $BC = 5$ cm, $AC - AB = 1$ cm, then $\frac{1 + \sin(c)}{1 + \cos(c)}$ is
(a) $\frac{5}{6}$ (b) $\frac{6}{5}$
(c) 2 (d) $\frac{25}{18}$
- Which of the following statements are True in the context of circles?
A. A tangent of a circle touches it at two points.
B. A circle can have two parallel tangents at the most.
C. There is no tangent to a circle passing through a point inside the circle.
Choose the correct answer from the options given below.
(a) A and B only (b) A, B and C
(c) A and C Only (d) B and C Only
- The mean of 25 observations is 36. If the mean of the first 13 observations is 32 and that of the last 13 observations is 39, then the 13th observation is
(a) 16 (b) 23
(c) 21 (d) 18
- The graph of a polynomial $y = f(x)$ is shown in figure below, then the number of its zeros is:
(a) 4 (b) 3
(c) 2 (d) 1
- How many proper divisors (that is, divisors other than 1 or 7200) does 7200 have?
(a) 54 (b) 52
(c) 20 (d) 18
- Given below are two statements:
Statement (I): The volume of a right circular cylinder of base radius 7 cm and height 10 cm is 1540 cm³.
(Take $\pi = \frac{22}{7}$)
Statement (II): Total surface area of the cylinder having radius of base 14 cm and height 30 cm, is 3872 cm².
(Take $\pi = \frac{22}{7}$)
In light of the above statements, choose the most appropriate answer from the options given below.
(a) Both Statement (I) and Statement (II) are true.
(b) Both Statement (I) and Statement (II) are false.
(c) Statement (I) is true but Statement (II) is false.
(d) Statement (I) is false but Statement (II) is true.
- A 30 metre deep well, with diameter 7 metre is dug and the earth from digging is evenly spread out to form a platform of size 22 metre by 14 metre. The height of the platform is
(a) 3.5 metre (b) 3.75 metre
(c) 2.5 metre (d) 3 meter
- Given below are two statements:
Statement (I): $(x^2 + 3x + 1) = (x - 2)^2$ is not a quadratic equation
Statement (II): The nature of roots of quadratic equation $x^2 + 2x\sqrt{3} + 3 = 0$ are real and equal.
In light of the above statements, choose the most appropriate answer from the options given below.
(a) Both Statement (I) and Statement (II) are true.
(b) Both Statement (I) and Statement (II) are false.
(c) Statement (I) is true but Statement (II) is false.
(d) Statement (I) is false but Statement (II) is true.



10. Let A and B be two events such that $P(A) = 0.25$, $P(B) = 0.50$ and $P(A \cap B) = 0.14$. The probability that neither A nor B occurs is
 (a) 0.09 (b) 0.19
 (c) 0.39 (d) 0.29

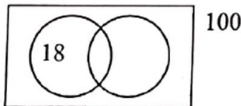
11. Given below are two statements in the context of throwing two different dice together.

Statement (I): The probability that the two numbers obtained have even sum, is 0.50.

Statement (II): The probability that the two numbers obtained have even product is 0.75.

In light of the above statements choose the most appropriate answer from the options given below.

- (a) Both Statement (I) and Statement (II) are true.
 (b) Both Statement (I) and Statement (II) are false.
 (c) Statement (I) is true but Statement (II) is false.
 (d) Statement (I) is false but Statement (II) is true.
12. In a survey of 100 students, the number of students studying various languages were found to be English only-18, English but not Hindi-23, English and German-8, English-26, German-48, German and Hindi-8, no language -24. Then, which of the following statements are true?



- A. Number of students who were studying Hindi is 18.
 B. Number of students who were studying English and Hindi is 3.
 C. Number of students who were studying English, Hindi and German is 3.

Choose the correct answer from the options given below:

- (a) A and B only (b) A and C only
 (c) B and C only (d) A, B and C

13. The area of the circle that can be inscribed in a square of side 6 cm is
 (a) $36\pi \text{ cm}^2$ (b) $18\pi \text{ cm}^2$
 (c) $12\pi \text{ cm}^2$ (d) $9\pi \text{ cm}^2$

14. Given below are two statements:

Statement (I): 4 boys and 8 girls completed $\frac{1}{3}$ rd of work in 5 days. After that 3 boys and 3 girls increased, and they completed $\frac{1}{3}$ rd more work in 3 days. If the remaining work is to be completed in 2 days, then the number of girls that should be increased is 32.

Statement (II): The ratio of time taken by A and C to do a work is 1 : 2 respectively. B is $166\frac{2}{3}\%$ more efficient than C. Time taken by A to complete 6% of work is 6 days. Then, the time taken by B and C together to complete the whole work is $54\frac{6}{11}$ days.

In light of the above statements choose the most appropriate answer from the options given below.

- (a) Both Statement (I) and Statement (II) are true.
 (b) Both Statement (I) and Statement (II) are false.

- (c) Statement (I) is true but Statement (II) is false.
 (d) Statement (I) is false but Statement (II) is true.
15. Sonali buys 2 Pen Drives A and B and their cost price is in the ratio of 5 : 6 respectively. If she sells them on 10% profit each, she earns total profit of ₹22. What will be her total profit if she sells Pen Drive A on 20 % loss and Pen Drive B on 30% profit?

- (a) ₹16 (b) ₹13
 (c) ₹14 (d) ₹24

16. The total number of seconds in P weeks. P days P hours, P minutes and P seconds is.

- (a) 11580P (b) 11581 P
 (c) 694860 P (d) 694861 P

17. Amicable numbers are a pair of distinct natural numbers (a, b) such that the sum of the proper divisors of a equals b and the sum of the proper divisors of b equals a. Given that (220, y) is a pair of amicable numbers, y = _____.
 (For example, proper divisors of 10 are 1, 2, 5, 10).

- (a) 225 (b) 284
 (c) 404 (d) 768

18. The probabilities that A, B and C can solve a problem independently are $\frac{1}{3}$, $\frac{1}{3}$ and $\frac{1}{4}$ respectively. The probability that only two of them are able to solve the problem is

- (a) $\frac{5}{36}$ (b) $\frac{7}{36}$
 (c) $\frac{13}{36}$ (d) $\frac{1}{2}$

19. Given below are two statements, one is labelled as Assertion (A) and other one labelled as Reason (R)

Assertion (A): Sum of first hundred even natural numbers divisible by 5 is 45050.

Reason (R) : Sum of first n-terms of an Arithmetic

Progression is given by $S_n = \frac{n}{2}(a + l)$ where a = first term,

l = last term

In light of the above statements, choose the correct answer from the options given below.

- (a) Both (A) and (R) are true and (R) is the correct explanation of (A).

- (b) Both (A) and (R) are true but (R) is NOT the correct explanation of (A).

- (c) (A) is true but (R) is false

- (d) (A) is false but (R) is true.

20. The expression $2x^3 - ax^2 + bx + 3$, where a and b are constants, has a factor of $x - 1$ and leaves a remainder of 15 when divided by $x + 2$. Then, (a, b) =

- (a) (-3, 8) (b) (3, -8)
 (c) (-3, -8) (d) (3, 8)

21. Given below are two statements based on the following. A man takes half time in rowing a certain distance downstream than upstream.

Statement (I): Ratio of the speed of the boat in still water to the speed of the water current is 2 : 1.

Statement (II): If the speed of the boat in still water is 6 km per hour, then the speed of the water current is 2 km per hour.

- In light of the above statements, choose the most appropriate answer from the options given below.
- (a) Both Statement (I) and Statement (II) are true.
 (b) Both Statement (I) and Statement (II) are false.
 (c) Statement (I) is true but Statement (II) is false
 (d) Statement (I) is false but Statement (II) is true.
22. In a Women's Chess Championship having 300 entrants, a player is eliminated whenever she loses a match. It is given that no match results in a draw. The number of matches that are played in the entire Championship is
 (a) 301 (b) 300
 (c) 299 (d) 298
23. $\sqrt{3 + \sqrt{5}} =$
 (a) $\sqrt{2} + 1$ (b) $\sqrt{\frac{5}{2}} + \sqrt{\frac{1}{2}}$
 (c) $\sqrt{\frac{7}{2}} - \sqrt{\frac{1}{2}}$ (d) $\sqrt{\frac{9}{2}} - \sqrt{\frac{3}{2}}$
24. If the pair of linear equations $2x + 3y = 7$ and $2px + (p + q) = 28$ has infinite number of solutions, then $(p, q) =$
 (a) (8, 4) (b) (4, 8)
 (c) (3, 6) (d) (6, 3)
25. Given below are two statements:
Statement (I): The difference, the sum and the product of two numbers are in the ratio 1 : 5 : 12. The product of the two numbers is 18.
Statement (II): The last digit in the decimal representation of 2^{21} is 6.
 In light of the above statements choose the most appropriate answer from the options given below.
 (a) Both Statement (I) and Statement (II) are true.
 (b) Both Statement (I) and Statement (II) are false.
 (c) Statement (I) is true but Statement (II) is false.
 (d) Statement (I) is false but Statement (II) true.
26. If the difference between the circumference and radius of circle is 37 cm, then using $\pi = \frac{22}{7}$, what is the circumference (in cm) of the circle?
 (a) 42 cm (b) 46 cm
 (c) 44 cm (d) 38 cm
27. $K^2 - 1$ is divisible by 8, if K is
 (a) an integer
 (b) a natural number
 (c) an even integer
 (d) an odd integer
28. Which of the following statements are True?
 A. The mean of x, y, z is y . Then $x + z = 2y$
 B. Median of 15, 28, 72, 56, 44, 32, 31, 43 and 51 is 43.
 C. Mode of 2, 3, 4, 5, 0, 1, 3, 3, 4 and 3 is 3.
 Choose the correct answer from the options given below.
 (a) A and B only (b) A and C only
 (c) B and C only (d) A, B and C
29. The radii of two cones are in the ratio 2 : 3 and their volumes in the ratio 1 : 3. Then the ratio of their heights is
 (a) 3 : 2 (b) 1 : 2
 (c) 3 : 4 (d) 2 : 3
30. If $\sin(\theta) - \cos(\theta) = 0$, then the value of $\sin 4(\theta) + \cos 4(\theta)$ is
 (a) 1 (b) $\frac{1}{2}$
 (c) $\frac{3}{4}$ (d) $\frac{1}{4}$
31. Sumit has ₹90000 with him. He purchases three items A, B and C for ₹15000, ₹13000 and ₹35000 respectively and puts the remaining money in a bank deposit that pays compound interest @15% per annum. After 2 years, he sells off the three items at 80% of their original price and also withdraws his entire money from the bank by closing the account. What is the total change in his asset?
 (a) -4.152% (b) -3.152%
 (c) -4.325% (d) +5.552%
32. The number of integral solutions of the equation $7\left(y + \frac{1}{y}\right) - 2\left(y^2 + \frac{1}{y^2}\right) = 9$ is
 (a) 0 (b) 1
 (c) 2 (d) 3
33. If the eight-digit number $5a32465b$ is divisible by 88, then $2a + 5b =$
 (a) 36 (b) 38
 (c) 40 (d) 24

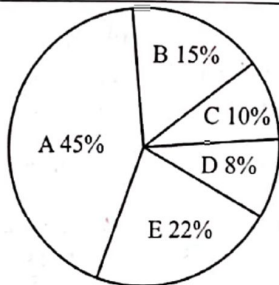
Data Interpretation & Logical Reasoning

DIRECTIONS (Qs. 34-37): The table below gives the percentage of marks obtained by 6 students in 6 subjects in an examination. Answer the following questions based on the data given in the table. The numbers in brackets are the maximum marks in each subject.

Student	Subjects (Max Marks)					
	Physics (120)	Biology (120)	Maths (120)	Geology (120)	Economics (120)	English (120)
A	70	75	70	65	60	70
B	80	70	75	60	50	75
C	75	72	71	70	60	65
D	60	70	65	55	60	70
E	70	75	65	50	55	60
F	65	70	60	65	50	60

34. Find the average marks obtained by a student in Economics and Physics respectively.
(a) 84, 67 (b) 65, 83
(c) 66, 85 (d) 67, 84
35. What is the overall percentage of A, B and C respectively?
(a) 68.44, 69.29, 68.94 (b) 68.94, 68.14, 68.29
(c) 68.33, 68.33, 68.83 (d) 67.14, 68.14, 69.94
36. How many students have obtained more than 65% overall marks in all the subjects and who are those students?
(a) 3; A, B, C (b) 2; B and C
(c) only one; B (d) 3; B, C, D
37. In which subject the overall percentage is maximum and what is the percentage?
(a) Biology, 72% (b) Physics, 70%
(c) Maths, 71% (d) English, 71%

DIRECTIONS (Qs. 38-40): The following Pie chart shows the share of sales of five computer brands (A-E) in India in 2005:



38. In 2006, if sales value of B increases by 10% and that of A decreases by 10%. What is the percentage change in sales, if sale of all other brands remain same?
(a) No change (b) Decrease by 3%
(c) Increase by 6% (d) Decrease by 1%
39. In 2006, value wise sale of A increased by 50% and that of E increased by 10%. The sales of all other brands remained the same. By what percentage total sales (value wise) grew in 2006 as compared to 2005?
(a) 124% (b) 60%
(c) 24.7% (d) 12.1%
40. Considering sale of A increased by 50% in 2006, sale of E increased by 10% and all other brands had no change in sales. Total sales in 2006 was 2,16,000. What was the sale of A in 2005 (approximately)?
(a) 1,23,000 (b) 1,08,000
(c) 77,947 (d) 1,16,920
41. Five people A, B, C, D and E participated in a race. D ran faster than E but slower than B. C ran slower than E but was not the slowest. Who ran at the fastest speed?
(a) A (b) C
(c) B (d) D
42. There is a certain relationship between two given terms on one side of (: :) and one term is given on the other side of (: :). While another term is to be found from given alternatives having the same relation with this term as the terms of given pair.

BJMS : EMPV = AWPL : ?

- (a) DYRO (b) CYRN
(c) DZSO (d) BYTN

DIRECTIONS (Qs. 43-44): Study the table given below carefully and answer the questions that follow:

Number of vehicles (in hundred) passing through a toll plaza in different weeks of September.

Vehicle	Bus	Truck	Car
Weeks			
I	28.3	15.4	40.2
II	24.5	12.3	36.1
III	20.4	14.2	42.9
IV	24.4	15.7	39.8

43. In which week of September, the total number of vehicles passing through the toll plaza was the second highest?
(a) II (b) IV
(c) I (d) III
44. What was the average number of buses passing through the toll plaza per week?
(a) 2530 (b) 2860
(c) 2070 (d) 2440
45. Two cars A and B start running from the opposite ends X and Y of a national highway with a length of 120 km. Car A starts from end X and runs 30 km straight. It then takes right turn and runs 15 km then turns left and runs for 30 km. There after the Car turns towards the highway and reaches back on the highway. In the mean time the car B has also started running from the other end Y of the highway, but due to a minor breakdown could run only for 35 km along the highway till the time the car A has reached back on the highway. What is the distance between two cars at this point?
(a) 28 km (b) 35 km
(c) 30 km (d) 25 km
46. A boy runs 150 meters towards south from his house. He then turns left and runs 300 meters, again turns left and runs 350 meters. Now he turns right and runs 50 meters to reach the stadium. In which direction is the stadium from house of the boy?
(a) North (b) South-East
(c) East (d) North-East
47. In a certain coding language. HE is coded as 418 and GO is coded as 240. How SHE will be coded in that language?
(a) 4444 (b) 3333
(c) 4433 (d) 3344
48. A Clock shows the time as 3 : 00 p.m. What would be time on the clock, when the hour hand moves 135° ?
(a) 5:30 (b) 7:30
(c) 6:30 (d) 8:30
49. Suppose that the year 2008 starts with the day "Monday"; The calendar for the year 2009 will be the same in the year:
(a) 2015 (b) 2011
(c) 2013 (d) 2016
50. Find the missing term in the series given below:
10, 11, 13, 17, 25, 31, 37, ?
(a) 69 (b) 45
(c) 62 (d) 47

51. Sham knows that Ram's birthday falls between 14th and 21th October. According to Shalini Ram's birthday falls between 15th and 20th October. Both of them also know that this year his (Ram's) birthday falls on Wednesday. If 2nd October is Monday, then when does Ram's birthday fall?
 (a) 16th October (b) 17th October
 (c) 18th October (d) 19th October
52. Which of the words can not be formed from the letters of the word CONSULTATION?
 (a) NATION (b) STATION
 (c) SOLUTION (d) SALUTE
53. In a certain Coded language CAT is coded as 6423 - How LION will be coded in that language?
 (a) 15121817 (b) 1291514
 (c) 961211 (d) 14131716
54. Match List-I with List-II

List-I	List-II
Angle between hour hand and minute hand of a clock	Time
(A) 105°	(i) 7 : 15
(B) 45°	(ii) 9 : 15
(C) 127.5°	(iii) 4 : 30
(D) 187.5°	(iv) 2 : 30

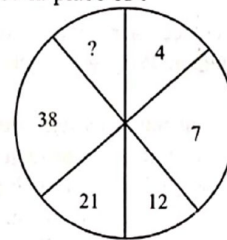
Choose the **correct** answer from the options given below.

- (a) (A) - (IV), (B) - (III), (C) - (I), (D) - (II)
 (b) (A) - (I), (B) - (II), (C) - (III), (D) - (IV)
 (c) (A) - (II), (B) - (I), (C) - (III), (D) - (IV)
 (d) (A) - (III), (B) - (IV), (C) - (I), (D) - (II)
55. Ram and Sham are real brothers. Sita and Gita are real sisters. Ram's son is Gita's real brother. How is Sham related to Sita?
 (a) Sham is brother of Sita
 (b) Sham is father of Sita
 (c) Sham is uncle of Sita
 (d) Sham is Grand father of Sita
56. Six persons P, Q, R, S, T and U were sitting around a hexagon table facing the center. U was sitting opposite to P, who was in the immediate left of R. S was sitting to the immediate right of U and T was exactly between P and S. What was the sitting location of Q ?
 (a) Opposite to R (b) Opposite to P
 (c) Between U and R (d) Immediate left of P
57. Answer the following based on analogy. Ecology is related to Environment in the same way as Histology is related to _____.
 (a) History (b) Hormones
 (c) Tissues (d) Fossils
58. Unscramble the letters in the given words in order to generate meaningful words and then find the odd one out. EIWNTR LCUOD UMRSME PIGRSN
 (a) EIWNTR (b) LCUOD
 (c) UMRSME (d) PIGRSN

59. Find the number that can replace question mark (?) in the series given below.
 15, 18, 17, 21, 20, 25, 24, 30, 29, ?
 (a) 32 (b) 36
 (c) 28 (d) 59
60. Find the odd one among the following
 (a) PWSORAR (b) GPNEIO
 (c) TPORAR (d) JRABLNI
61. Eight persons A, B, C, D, E, F, G and H are sitting around a circle, facing the centre. E sits fourth to the right of F while second to the left of A. D is not the neighbour of A & C. B sits third to the right of D. F never sits next to H. Which of the following pairs sit between G and A ?
 (a) C, F (b) A, B
 (c) E, H (d) D, H

62. Find the number that can replace question mark (?) in the series given below.
 2, 12, 30, 56, 90, ?
 (a) 132 (b) 146
 (c) 136 (d) 128
63. The main statement is followed by four answers. Select the one that logically follows from the main statement "if the game is interesting, then I play it".
 (a) I played a game means it is interesting
 (b) The game is interesting. I do not play it
 (c) I did not play the game though it was interesting.
 (d) I did not play a game implies that the game was not interesting

64. Each of four persons P, Q, R and S play one game out of four different games namely Chess, Tennis, Cricket and Football not necessarily in the same order. These persons live in one of the four different cities of Bombay, Calcutta, Ahmedabad and Jaipur not necessarily in the same order. Further the following information is also given:
 (A) Neither S nor the person from Calcutta plays Cricket
 (B) Q plays either Football or Chess.
 (C) P is from Bombay
 (D) P plays either Chess or Tennis
 (E) The person who plays Tennis is from Jaipur
 The person who lives in Ahmedabad plays which of the following sports?
 (a) Tennis (b) Chess
 (c) Cricket (d) Football
65. The numbers in the figure below have certain logic/pattern. Using that logic/pattern, find out the number that can be inserted in place of ?



- (a) 45 (b) 42
 (c) 71 (d) 60

66. Six books of various subjects are kept in a shelf one on the top of the other. Electronics book is just above the Chemistry book. Statistics book is between Commerce book and Environmental Science book. The book of Botany is between Electronics and Commerce books. The book of which subject is at the top?
- (a) Chemistry
(b) Commerce
(c) Environmental Science.
(d) Electronics

Verbal Ability & Reading Comprehension

67. This question has a word followed by four choices. From the choices, identify the one which is opposite in meaning (antonym) for the main word and mark its number as your answer.

CONSIDERATE

- (a) Comprehensive (b) Atrocious
(c) Malignant (d) Indifferent
68. Pick out the correct sentence in passive voice of the following sentence.
He will finish the work in a fortnight.
- (a) He would be finished the work in that fortnight.
(b) The work would be finished in that fortnight
(c) The work was finished by him in a fortnight.
(d) The work will be finished by him in a fortnight.
69. Pick out the synonym of the word 'reproach'
- (a) reprimand (b) appreciate
(c) understand (d) to approach again
70. Read the following paragraph and determine carefully the main idea. From the four choices, select the one statement that best supports the author's point:
Litigation is not always the only or best way to resolve conflicts. Mediation offers an alternative approach and it is the one that can be quite efficient and successful. Mediation can be faster, less expensive and can lead to create solutions not always possible in a court of law. Additionally, mediation focuses on mutually acceptable solutions, rather than on winning or losing.
This paragraph best supports the idea that
- (a) there is too much reliance on litigation in our society.
(b) Litigation is expensive, slow and limited by its reliance on following the letter of the law.
(c) Mediation is the best way to resolve a crisis.
(d) Mediation can be an effective way to resolve conflicts.
71. Pick out the correct sentence in active voice of the following sentence: Why was such a letter written by your father?
- (a) Why had your father written such a letter?
(b) Why did your father wrote such a letter?
(c) Why did your father write such a letter?
(d) Why was your father writing such a letter?
72. This question gives a word followed by four choices. From the choices, select the most suitable synonym (word

which means the same) for the main word and mark its number as the answer.

FAMISHED

- (a) Agricultural (b) Hungry
(c) Prestigious (d) Feasible
73. Fill in the blank with suitable preposition.
He put _____ his departure for a week.
- (a) down (b) off
(c) of (d) on
74. Give meaning of the underlined idiom as used in the following sentence: He requested her to reconsider the decision but she put her foot down.
- (a) agreed to consider (b) ignored
(c) listened very carefully (d) refused to yield.
75. Pick out the correct sentence in indirect narration of the following sentence: He said, "Let us wait for the award."
(a) He proposed him to wait for the award.
(b) He proposed that they should wait for the award.
(c) He agreed to wait for the award with him.
(d) He proposed me that I should wait for the award.
76. Pick out the correct sentence from the following sentences.
(a) She doesn't like to gets up early.
(b) She doesn't likes to get up early.
(c) She doesn't like to get up early.
(d) She doesn't likes getting up early.
77. This question gives a word followed by four choices. From the choices, select the most suitable synonym (word which means the same) for the main word and mark its number as the answer.
PALPABLE
- (a) visible (b) perceivable
(c) audible (d) presentable
78. Fill in the blank with suitable preposition.
While going to Chandigarh, our car broke _____ in midway.
- (a) apart (b) up
(c) down (d) into
79. Pick out the correctly spelt word.
(a) disaster (b) documentation
(c) deviation (d) dormitory
80. Read the following paragraph and determine carefully the main idea. From the given four choices, select the one statement that best supports the author's point.
Critical Reading is a demanding process. To read critically, you must slow down reading and with pencil in hand, perform specific operations on the text. Mark-up the text with your reactions, conclusions and questions. When you read, you become an active participant.
This paragraph best supports the statement that
- (a) critical reading is a slow, dull, but essential process.
(b) readers should get in the habit of questioning the truth of what they read.
(c) the best critical reading happens at critical times in a person's life.
(d) critical reading requires thoughtful and careful attention.

81. Fill in the blank with suitable form of verb.
A bird in the hand _____ worth two in the bush.
(a) are (b) were
(c) was (d) is
82. Pick out the synonym of the word 'Communicable':
(a) Communication (b) Contagious
(c) Commutation (d) Understandable
83. Read the following sentence and choose the best definition for the underlined word by searching for context clues in the sentence.
Mr. Powers was so gullible that he believed even the most outlandish excuses of his insincere employees.
(a) intelligent (b) naive
(c) dishonest (d) critical
84. Arrange the following parts of a sentence in order to make a meaningful sentence.
P: around the town
Q: when I was young,
R: delivering food to customers
S: shopkeepers would cycle
(a) RSPQ (b) QSPR
(c) SRPQ (d) PQRS
85. Pick out the correct sentence from the following sentences.
(a) Who had replaced the player after she was injured?
(b) Who replaced the player after she were injured?
(c) Who was replacing the player after she had been injured?
(d) Who replaced the player after she was injured?
86. Pick out the correct sentence in indirect narration of the following sentence: She said to him, "Please wait here till I return"
(a) She requested her to wait there till she returned.
(b) She requested him to wait there till she returned.
(c) She requested him to wait there till she returns.
(d) She requests him to wait there till she had returned.
87. Read the following sentence and choose the best definition for the underlined word by searching for context clues in the sentence.
The attorney wanted to expedite the process, because her client was becoming impatient.
(a) accelerate (b) evaluate
(c) reverse (d) justify
88. Pick out the correct sentence from the following sentences.
(a) Hardly had the function got over, the crowd dispersed.
(b) Hardly have the function getting over, the crowd dispersed.
(c) The function was not got over after the crowd were dispersed.
(d) Hardly had got over the function, the crowd disperse.
89. This question gives a word followed by four choices. From the choices, select the most suitable synonym (word which means the same) for the main word and mark its number as the answer.
OSTENSIBLE -
(a) strong (b) desirable
(c) apparent (d) fateful
90. Fill in the blank with suitable form of verb.
Read _____; nor to believe; but to weigh and consider.
(a) to not contradict (b) contradict not to
(c) to contradictory (d) not to contradict
- DIRECTIONS (Qs. 91-94):** Read the following passage carefully and answer the questions that follow.
- The night was cold and dark. There was a great storm, thunder and lightning also. Most men and animals, adequately protected, were asleep in their homes. They were warm and happy. But some monkeys were running through the forest. They had no warm home and there was cold. Worried monkeys looked everywhere for shelter. They had almost resigned themselves to be flattened out by the cold. Suddenly they saw some fireflies. Now, fireflies have a light in their tails, as all our children know. The monkeys took the light for fire. Poor things, they did not know any better. They said, "We will go near the fire and warm ourselves."
- There was a flock of birds in a tree nearby. One bird had a kind heart, and it felt sorry for the monkeys. It called out "That is not fire, my friends! Those are fireflies. They give no heat. It is futile to run after them." Then monkeys got furious and their rage knew no bounds. They did not thank the bird. One monkey said rudely, "Is it so? We do not want unsolicited advice. I will teach you to say there is no fire." He jumped up the tree and pulled the poor bird out of its nest. "Alas!, said the poor bird. "Why did I try to help a fool?"
91. The bird tried to help the monkeys because she _____.
(a) gave an unsolicited advice.
(b) was kind and felt sorry for them.
(c) wanted to save the fireflies
(d) wanted to distract the monkeys.
92. In the above passage, night is described as _____.
(a) lovely & attractive
(b) cold & stormy
(c) fit for hunting
(d) warm & thunderous
93. What happens when you try to help a fool?
(a) You get a lot of credit for it
(b) You develop friendship with him
(c) You may invite danger for yourself
(d) You may harm him too.
94. The monkeys were running through the forest because they _____.
(a) were in search of food
(b) liked running about in dark
(c) were in search of a warm shelter
(d) wanted to kill the birds
95. Pick out the part of sentence which has an error. If there is no error, mark the option "No Error".
Writing the letter is often cheaper
A B
than telephoning
C
(a) A (b) B
(c) C (d) No Error

96. Pick out the correct sentence from the following sentences.
- (a) Due to his ill health, he decided to not perform on the stage.
(b) Due to his ill health, he decided not to perform on the stage.
(c) Due to his ill health, he did not decided to perform on the stage.
(d) Due to his ill health, he decide not to perform on the stage.
97. Arrange the following parts of a sentence in order to make a meaningful sentence. P: an extra person
Q: this card entitles
R: with you free
S: you to take
- (a) QSPR (b) PQRS
(c) RPQS (d) SQRP
98. Fill in the blank with a suitable word.
There are more things in heaven and earth _____ are dreamt of in our philosophy.
(a) then (b) thin
(c) than (d) where
99. Pick out the correctly spelt word.
(a) unequivocaly (b) unequivocally
(c) enequivocally (d) univocally
100. Fill in the blank with a suitable form of verb.
Time and tide _____ for none.
(a) waits (b) wait
(c) waiting (d) had waited

